

Beech Elementary School  
3120 Long Hollow Pike

Hendersonville, TN 37075

*Bid Specification for Serving Line*

General Specifications:

1. Modular serving lines with 30" wide bodies.
2. Bodies to be constructed of stainless steel with uncoated plastic laminate on fronts of all

- counters. Color to be determined by Sumner County Schools at time of ordering.
3. Operator side to have hinged doors with recessed handles.
4. 14 gauge stainless steel tops with turndown on both sides to cover tray slide turn ups to create a seal between counter tops and tray slides.
5. Counter top height to mentioned per item number.
6. Tray slide height to be 32" A.F.F.
7. Tray slides to be 10" wide solid flat stainless steel tray slides on fixed brackets without

3. 30" A.F.F.
4. Casters.

Item 3A:               HOT FOOD COUNTER, Qty. 1  
Manufacturer:       DUKE, or pre-approved alternate  
Model #:             TWHF-74SS

1. 74" long counter shall have (5) 12x20 waterless hot food well drop in unit.
2. Electrical: 208v, 1ph. NEMA 6-20P.
3. Food shields to be in full service position.

5. 7" wide hinged cutting board to be flush with 1" recess.

6. 1" recess to hold 18x26 pans.

7. Counter to be 34" A.F.F.

8. Counter to have 10' cord and plug. Heated wells and food shield lights to plug into interconnect box for single cord and plug from counter.

Item 3B:               HOT FOOD COUNTER, Qty. 1  
Manufacturer:       DUKE, or pre-approved alternate  
Model #:             TWHF-74SS

1. 74" long counter shall have (5) 12x20 waterless hot food well drop in unit.
2. Electrical: 208v, 1ph. NEMA 6-20P.
3. Food shields to be in full service position.
4. Food shields to be single tier with LED bulbs.
5. 7" wide hinged cutting board to be flush with 1" recess.
6. 1" recess to hold 18x26 pans.
7. Counter to be 34" A.F.F.

Model #: CWB-3

1. Drop in Refrigerated wells shall be mechanically cooled and meet NSF 7 standards.

2. Electrical 120 V 1.1 2.0- (NEMA 5-15R)

3. Cold food wells to hold (3) 12x20 pans and be provided with slant kit option.
4. Warranty: One year parts and labor warranty.
5. Drop in to be purchased by KEC and installed by manufacturer.

Item 4B: UTILITY COUNTER, Qty. 1  
Manufacturer: DUKE, or pre-approved alternate.  
Model #: TST46SS MOD

1. 46" long solid top counter with 10" filler.
2. Rectangular cutout with reinforced edges, in counter top.
3. Food shield to be in self service position.

1. 32" long solid top counter.
2. Counter to be 32" A.F.F.
3. Without sneezeguard.
4. Tray slides on both sides of counter.

Item 8: CASHIER STATION, Qty. 1  
Manufacturer: DUKE, or pre-approved alternate  
Model #: EQG 2000

1. Cashier station shall have drawer with lock and keys.
2. Cashier station to have tray slide operator left and operator right

3. Counter to be 34" A.F.F.
4. Cutout on top with grommet for POS power cords.

Beech Elementary School

Hendersonville, TN 37075

*Bid Specification for Equipment*

Item 2: MILK COOLER, Qty. 2  
Manufacturer: DUKE, or pre-approved alternate  
Model #: RMC34D4

8. Glass dutch doors.
9. Energy star rated.
10. Casters.
11. Warranty: 1 year labor and 2 year parts warranty.

Installation Requirement for Successful Bidder:

- Deliver, uncrate, set in place, level, remove laser film from all stainless steel, and remove crating from the premises.
- Make all final electrical connections to holding cabinets.
- Sumner County Maintenance Department to have all properly sized NEMA receptacle in place for final connections by successful dealer.

Item 10: REACH IN COOLER  
Manufacturer: TRAUlsen, or pre-approved alternate  
Model #: AHT132WUT-FHG  
Qty: 2

1. One compartment, Reach In Refrigerator with stainless steel door.
2. Electrical: 115v/60/1ph.
3. Microprocessor control with LED temperature display

4. Evaporator coil outside food zone.
5. StayClear Condensor Coil.
6. Stainless steel exterior and anodized aluminum interior.

9. 15 each universal tray slides.



Beech High School  
3126 Long Hollow Pike  
Hendersonville, TN 37075

*Bid Specifications for Equipment*

Item 1: STEAMER

Manufacturer: YUKON

Model #: C24ET10  
Qty: 1 each



Model #: VE40

1. Modular electric tilting braising pan, 36" wide open base.
2. Electrical: 208v, 3ph. 20 amps. **VERIFY BEFORE ORDERING.**
3. Stainless steel front, sides, back, and 12" legs with adjustable flanged feet.
4. Front hinged polished stainless steel pan body with covered interior corners and embossed

7. Full height glass door with lock.
8. Thermostatic Expansion Valve Metering Device.
9. EZ clean door gasket.
10. Three epoxy coated shelves factory installed.
11. 6" locking casters.
12. Warranty: Six year parts and labor and Seven year additional compressor parts warranty.

Installation Requirements for Successful Bidder:

crating from the premises.

- Make all final electrical connections to reach in cooler.
- Summer County Maintenance Department to have all properly sized NEMA receptacles in

Model #: AIH232LP-FHS  
Qty: 2

1. Two Compartment, Roll Thru Heated Cabinet.
2. Electrical: 208v/60/1ph, 15.5 amps. NEMA L14-20P. VERIFY BEFORE ORDERING.
3. Accommodates roll in racks up to 66" high.
4. Stainless steel exterior and anodized aluminum interior.
5. Full Height Glass door on operator side, control side.
6. Full Height Stainless steel door on customer side.
7. Dimensions: 68" x 39 1/8" x 83 1/4" H.
8. Santoprene Gaskets to help simplify cleaning and increase gasket life.
9. Smart Control with LED display.
10. Warranty: 6 year parts and labor.

Installation Requirements for Successful Bidder

- Removal and dispose of existing Roll In Heated Cabinet.
- Deliver, uncrate, set in place, level, remove laser film from all stainless steel, and

Beech High School  
3126 Long Hollow Pike

*Bid Specifications for Combination Cooler/Freezer Walk In*

Manufacturer: THERMO-KOOL, or pre-approved alternate  
Model #: Q42259-25

Description:

1. Walk-In Combination Cooler and Freezer shall be located indoors on level surface.
2. Total dimensions shall be 22' 10" x 12'8" x 7'10" High. Nominal dimensions not accepted.
3. Insulation: 4" DURATHANE, all-urethane foamed-in-place (Class 1).

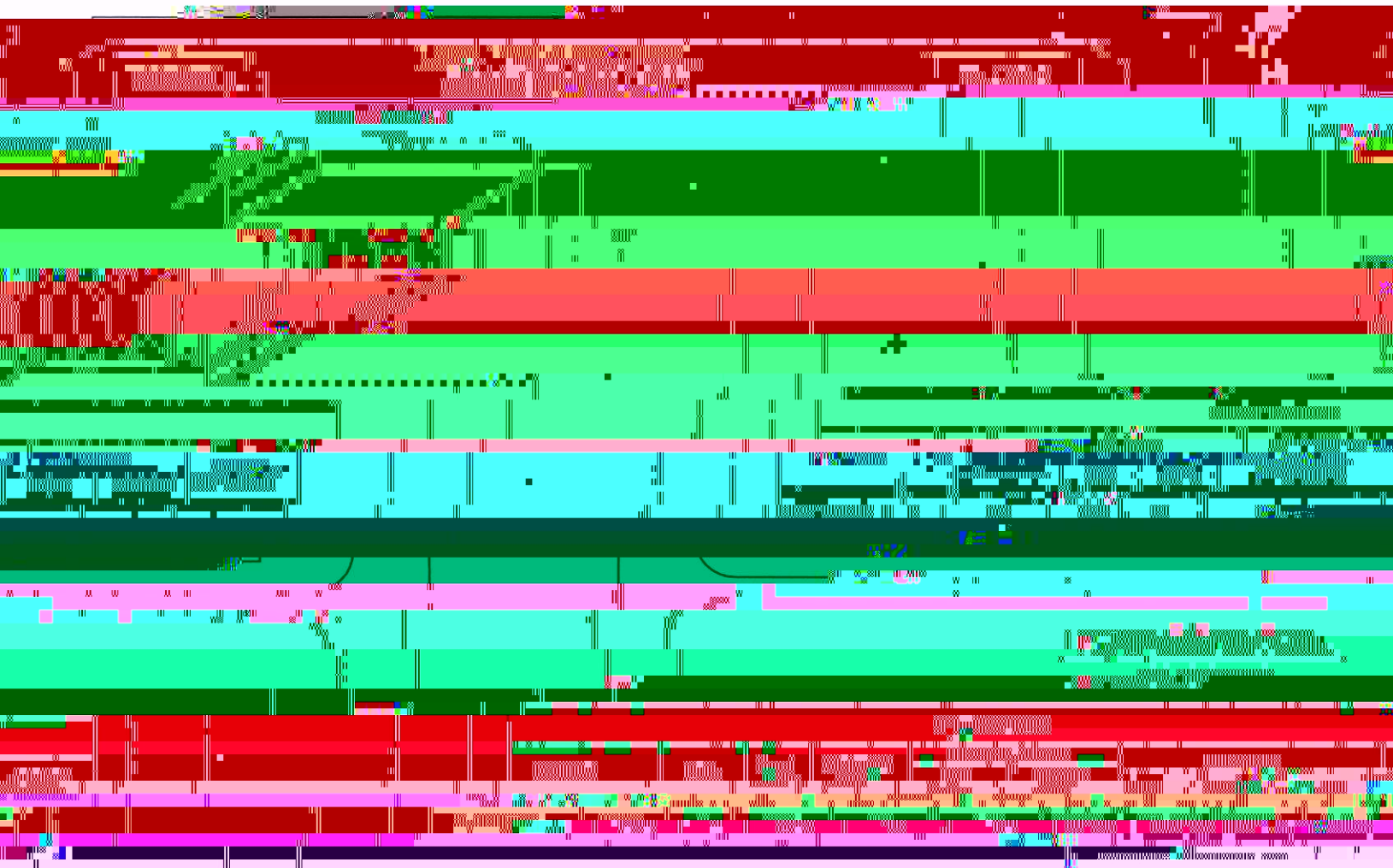
labor warranty.

- 24. All panels are pre-assembled at the factory prior to shipment for a thorough quality control inspection. A digital photograph is taken of the preassembled walk in and sent to the dealer with all warranty paperwork.
- 25. Made in the USA.

Item 2:           SHELVING  
Manufacturer: CAMBRO – CAM SHELVING PREMIUM, or pre-approved alternate  
Model #:         PREMIUM SERIES

1. Premium series to offer composite material with mold in steel case. Cambro





BEECH HIGH SCHOOL

SCROLL

MEDIUM TEMPERATURE  
CONDENSING UNIT

R-448A

AIR-COOLED

208-230/60/3Ø



BethPage Elementary School  
420 Old Highway 31 E  
Bethpage, TN 37022

*Bid Specifications for Serving Line*

General Specifications

2. Bodies to be constructed of paint grip steel. Color to be determined by Sumner County Schools at time of ordering.
3. Operator side of all counters shall have hinged doors with recessed handles.
4. 14 gauge stainless steel tops with turndown on both sides to cover tray slide turn ups to create a seal between counter tops and tray slides.
5. Counter top heights to be 32" A.F.F.
6. Tray slide heights to be 31" A.F.F.
7. Tray slides shall be 10" solid stainless steel on fixed brackets without tray runners.

- Counters shall have 10' cord and plug. Heated wells and food shield lights shall plug into interconnect box for single cord and plug for counter. NEMA 14-20P.

Item 3: COLD WELL COUNTER, Qty. 1  
Manufacturer: DUKE, or pre-approved alternate  
Model #: 315-25-PG N7

- 46" long cold food counter shall be mechanically cooled and meet NSF 7 standards.
- Electrical: 120v, 1ph.
- Capacity to hold (3) 12x20 pans with condensate evaporator.
- Supply system brackets to raise the height of the food in COLD WELL to be 32" A.F.F.

counter top.

- Counter height to be 32" A.F.F.
- Caster shims – Part #251445. To help level cabinet on sloped floor.
- Counter shall have 10' cord and plug. Cold wells and food shield lights shall plug into interconnect box for single cord and plug for counter. NEMA 14-20P.

1. Dual Access Milk Cooler to have top mount removable refrigeration system.
2. Capacity – (12) 13"x13" crates or (24) 13"x19" crates
2. Cabinet to be made of stainless steel construction interior and exterior.
3. Cold Wall Refrigeration not accepted
4. Reinforced cabinet exterior bottom.
5. Sliding lift up and down door
6. Magnetic Snap-In EZ-Clean door gasket(s)
7. 8' Cord and Plug attached
8. Set of 4 each 4" casters
9. Warranty: 6 year labor and parts warranty. 7 year compressor parts warrant

Installation Requirements for bidding dealers:

~~Remove and dispose of existing serving line~~

- Deliver, uncrate, set in place, level, remove crating for all new equipment.
- To make all final electrical and plumbing connections.
- Will need to place the casters shims to help make serving line level.
- Responsible for interlocking cabinets together.

~~Install tray slides on both sides of cabinet. Tray slides are being supplied loose~~

BethPage Elementary School  
420 Old Highway 31 E  
Bethpage, TN 37022

*Bid Specifications for Equipment*

Item 6: CONVECTION OVENS,  
Manufacturer: VULCAN, or pre-approved alternate

Qty: 1

1. Double section, electric convection oven shall be constructed with stainless steel front, sides, top and legs.

Electrical: 480v, 3ph, 20 amps each compartment. VERIFY BEFORE ORDERING.

3. Solid state temperature controls adjust from 150 degrees to 500 degrees with digital display enhancement. Offers 60 minute timer with audible alarm.
4. Simultaneous doors. Independent door operation NOT ACCEPTED.
5. Porcelain enamel on steel oven interior.
6. Two interior oven lights.
7. Standard depth ovens.

1. Heated holding cabinet to have built in humidified holding system with both humidity and temperature controls.
2. Electrical: 120, 1ph, 13.8 amps. NEMA 5-15P. VERIFY BEFORE ORDERING.
3. Removable 12x 20x 2.5" deep humidity pan in base of unit.
4. Capacity – 12 sheet pans or 24 hotel pans (2.5" deep) with universal pan slides

5. Cabinet to be made with fully welded stainless steel construction. Fully welded tubular base frame for extra support and rigidity.
6. Magnetic work flow door handles.
7. Fully insulated cabinet through out.

9. Energy star rated.
10. Casters.
11. Warranty: 1 year labor and 2 year parts warranty.

Installation Requirements for successful bidder:

- Deliver, uncrate, set in place, level, remove crating for new holding cabinets.
- Removal and dispose of holding cabinet.
- To make all final electrical connections. The school system is responsible for having

13. Warranty: Two year extended limited parts and labor warranty.

Installation Requirements for Successful Bidders:

- Removal and dispose of existing braising pan and griddle with ovens.

remove crating from the premises of the new braising pan.

- Make all final electrical and water connections to new braising pan.
- Provide free Equipment Checkout for braising pan to be scheduled with authorized servicer.
- Sumner County Maintenance Department to have all of the proper utilities for final electrical prior to installation.

Bethpage Elementary School  
420 Old Hwy 31E  
Bethpage, TN 37022

*Bid Specifications for Outdoor Walk-In Freezer*

Item # 1: OUTDOOR WALK-IN FREEZER  
Manufacturer: THERMO-KOOL, or pre-approved alternate  
Model #: CUSTOM

Quantity: 1  
Description:

1. Exterior Dimensions shall be 7' 0" x 11' 0" x 8' 6" H
2. Panel specifications: All panels shall consist of metal pans formed to precise dimensions. Metal finish to be as specified. Insulation shall be "foamed-in-place" urethane to bond permanently to complete inner surfaces of both interior and exterior metal pans to form strong rigid unit. Panels shall not have internal wood or metal support, framing, straps, or other non-insulating members. Each panel shall be 100% urethane foam insulation exclusive of metal pans. Perimeter structure shall be formed of Durathane, high density urethane insulation forming tongues and grooves to assure vapor and airtight joints and to prevent pre-installation damage and deterioration of exposed urethane surfaces. Insulation shall be 4" thick rigid, zero ozone depleting

8. Interior and exterior of door and door panels shall also have aluminum diamond treadplate wainscot.



thermostat, liquid line drier, sight glass, suction line vibration eliminator, expansion

valve, and evaporator coil mounting kit), defrost timer, fan delay control and liquid line solenoid.

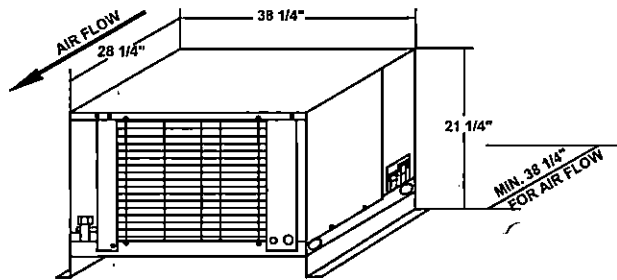
SCROLL

# LOW TEMPERATURE CONDENSING UNIT

R-448A

AIR-COOLED

208-230/60/1Ø



## SPECIFICATIONS

SPECIFICATIONS			
ELECTRICAL DATA	CAPACITY @ -10°	LINE SIZES	

1030 Union School Rd  
Gallatin, TN 37066

*Bid Specification for Equipment*

Item 2: CONVECTION OVEN, DOUBLE  
M.C. LULLGREN

Model #: VC44ED

Qty: 1

1. Double section, electric convection oven shall be constructed with stainless steel front, sides, top and legs.
2. Electrical: 480v, 3ph. 30 amps (per compartment) **VERIFY BEFORE ORDERING.**
3. Solid state temperature controls adjust from 150 degrees to 500 degrees with digital

1. Two Compartment, Roll Thru Self-Contained Refrigerated Cabinet.
2. Electrical: 115v/60/1ph, 11.6 amps. NEMA 5-15P.
3. Accommodates roll in racks up to 66" high.
4. Stay Clear condenser.
5. Stainless steel exterior and anodized aluminum interior.
6. Full Height Glass door on operator side, control side.
7. Full Height Stainless steel door on customer side.
8. Dimensions: 68" x 39 1/8" x 83 1/4" H.

11. Warranty: Six year parts and labor. Seven year compressor warranty.

Clyde Riggs Elementary School  
211 Fountain Head Rd  
Portland, TN 37148

*Bid Specifications for Equipment*

II \_\_\_\_\_

Manufacturer: VULCAN, or pre-approved alternate  
Model #: C24G05

2. Electrical 208v 1ph 40.1 amp Hand-wired VERIFY BEFORE ORDERING

3. Capacity = 18 sheet pans or 36 hotel pans (2 5" deep) with universal fry slides

4. Cabinet to be made with fully welded stainless steel construction. Fully welded tubular base frame for extra support and rigidity.
5. Insulated throughout – top, bottom, sides, doors using high density ceramic and fiberglass installation.
6. Heavy duty casters.

Make all final electrical and water connections to new braising pan

- Provide free Equipment Checkout for braising pan to be scheduled with authorized servicer.
- Sumner County Maintenance Department to have all of the proper utilities for final electrical prior to installation.

Clyde Riggs Elementary School  
211 Fountain Head Rd  
Portland, TN 37148

*Bid Specifications for Serving Line*

General Specifications:

2. Bodies to be constructed of stainless steel.
3. Operator side of all counters shall have hinged doors with recessed handles.
4. 14 gauge stainless steel tops with turndown on both sides to cover tray slide turn ups to

- create a seal between counter tops and tray slides.
5. Counter top height 34" A.F.F., unless noted.
6. Tray slide heights to be 30" A.F.F.
7. Tray slides to be 10" wide solid stainless steel on fixed brackets without tray runners.  
Shipped loose for dealer installation.
8. Tray slides to be located on operator side of cabinet.
9. Food shields to be single tier, self service to full service style. Food shields to be constructed with 3/8" tempered glass with rounded edges for the guards, tops, and end panels mounted onto 1" diameter stainless steel mounting posts. LED lights. Duke model #TS462.
10. All counters to be provided with cord and plug.
11. Faces with trim and railings





Item 6: UTILITY COUNTER, Qty. 1  
Manufacturer: DUKE, or pre-approved alternate  
Model #: 308-25SS

1. 32" solid top counter.

2. Without encasement

3. Counter to be 31" A.F. F.

Item 7: CASHIER STATION, Qty. 1  
Manufacturer: DUKE, or pre-approved alternate  
Model #: 306-25SS

1. Cashier station shall have drawer with lock and keys.
2. Cashier station to have tray slide on operator left.
3. Cutout on top with grommet for POS power cords.
4. Counter top height 34" A.F.F.
5. Electrical outlet mounted in base of counter. Duplex 5-15P. To be provided with 10' cord and plug.

Installation Requirements for Bidding dealers:

- Remove and dispose of existing serving line.
- Deliver, uncrate, set in place, level, remove crating from all new equipment.
- To make all final electrical connections.

- Install tray slides, manufacturer shipping loose.

- Summer Counter Maintenance Department to have all the proper utilities for final

Gallatin High School  
700 Dan P Herron Dr  
Gallatin, TN 37066

*Bid Specifications for Equipment*

Item 4: HEATED PASS-THRU CABINET  
Manufacturer: TRAUlsen, or pre-approved alternate

Qty: 1

1. Three Compartment, Pass Thru Heated Cabinet.
2. Electrical: 208-230v/115, 60, 1ph. 15 amps. Hardwired. VERIFY BEFORE ORDERING.
3. Full height glass doors on control side, operator side.
4. Full height stainless steel doors on customer side.
5. Door hinging TO BE VERIFIED BEFORE ORDERING.
6. Stainless steel exterior and Anodized Aluminum interior.
7. 76 5/16" Length, 32" Depth, 83 1/4" Height.

9. Microprocessor controls.
10. 15 each travslide- ner nair

11. 4" Casters.
12. Stainless steel pass-thru wall trim to be supplied and installed by dealer.

1. Double section, electric convection oven shall be constructed with stainless steel front, sides, top and legs.
2. Electrical: 208v, 3ph. 70 amps (per compartment) **VERIFY BEFORE ORDERING.**

Under enhancement Offer 60 minutes through 30 - 1911 - 11

12. Water Filtration System – ScaleBlocker.

13. CUSTOM Water Filtration Rack – Titan Model #WFR (36”x30”x24” rack with undershelf and flanged feet)

14. WARRANTY: Two year limited water related parts and labor warranty standard. Three year

[REDACTED]

[REDACTED]

[REDACTED]

[REDACTED]

[REDACTED]

[REDACTED]

[REDACTED]

[REDACTED]

[REDACTED]

[REDACTED]

[REDACTED]

[REDACTED]

[REDACTED]

[REDACTED]

[REDACTED]

[REDACTED]

[REDACTED]

[REDACTED]

[REDACTED]

[REDACTED]

[REDACTED]

[REDACTED]

[REDACTED]

[REDACTED]

[REDACTED]

[REDACTED]

[REDACTED]

[REDACTED]

[REDACTED]

[REDACTED]

[REDACTED]

[REDACTED]

[REDACTED]

[REDACTED]

[REDACTED]

[REDACTED]

[REDACTED]

[REDACTED]

[REDACTED]

[REDACTED]

[REDACTED]

15. New Equipment Checkout: Equipment checkout & start up included.

Installation Requirement for Successful Bidder:

- Removal and dispose of existing steamer and kettle.

Gallatin High School  
700 Dan P Herron Dr  
Gallatin, TN 37066

*Bid Specifications for Cafeteria Serving Line Equipment*

Item # 1: SERVING LINE  
Manufacturer: DUKE  
Model #: COUNTERCRAFT  
Quantity: 6  
Description:

1. Continuous piece, fully enclosed base style construction.

3. Counter tops to have highlighted & hemmed edges.
4. Silestone tray slide with 2-1/2" turn down. No tray runners on tray slides. Silestone color selection by Sumner County Schools.

- 16. All drains pre-plumbed.
- 17. Cashier stations with locking drawers, dedicated circuits, and electrical receptacles for POS systems

19. All lowered grills for refrigeration units shall be magnetic for ease of removal for

cleaning the coils.

20. Estimator shall handle installation of ceiling systems including all field work and

1. Heated display warmer designed for sale of pre-packaged sandwiches shall have dual, slanted shelves.
2. Infrared top heat with thermostatically controlled base heat.
3. Tempered glass end panels.
4. Standard anodized aluminum body with standard black inset panels.
5. 120/208v/1ph with cord and plug, NEMA L14-20P
6. One year parts and labor warranty.
7. Made in USA

Item # 3: HOT HOLDING CABINETS, UNDER COUNTER

Manufacturer: HATCO

Model #: FSHC-6W1

Quantity: 2

Description:



Guild Elementary School  
1018 S Water Street  
Gallatin, TN 37066

*Bid Specifications for Braising Pan*

Item 3: BRAISING PAN  
Manufacturer: Vulcan, or pre-approved alternate  
Model #: VE40  
Qty: 1

1 Modular gas tilting braising pan, 46" wide open base

3. Stainless steel front, sides, back and 12" legs with adjustable flanged feet.
4. Front hinged polished stainless steel pan body with covered interior corners and embossed gallon markings.
5. Stainless steel cooking surface bonded to steel plate. Full width 4" return flange with

L. 2.

\*\*\*\*\*

Manufacturer: VULCAN, or pre-approved alternate.  
Model: C24GA10  
Qty: 1

1. Two compartment gas convection steamer on cabinet base.
2. Natural Gas. VERIFY BEFORE ORDERING.
3. Stainless steel interior and exterior.

[REDACTED]

[REDACTED]

[REDACTED]

[REDACTED]

[REDACTED]

[REDACTED]

[REDACTED]

[REDACTED]

[REDACTED]

[REDACTED]

[REDACTED]

[REDACTED]

[REDACTED]

[REDACTED]

[REDACTED]

[REDACTED]

[REDACTED]

[REDACTED]

[REDACTED]

[REDACTED]

[REDACTED]

[REDACTED]

[REDACTED]

[REDACTED]

[REDACTED]

[REDACTED]

[REDACTED]

[REDACTED]

[REDACTED]

### ScaleBöcker- Water Filter Stand

Dear Dawn,  
I have received your order for the water filter stand. The stand is currently in production and will be ready for shipment in approximately 2-3 weeks. I will contact you again once the stand is ready to ship.

Best regards,  
[Name]

[Company Name]

[Address]

[Phone Number]

[Email Address]

[Website]

[Social Media Links]

[Additional Information]

[Closing Remarks]

[Signature]

[Date]

[Time]

[Location]

[Weather]

[Mood]

[Thoughts]

[Hopes]

[Dreams]

[Goals]

[Ambitions]

[Passions]

[Interests]

[Hobbies]

[Skills]

[Talents]

[Strengths]

[Weaknesses]

[Challenges]

[Obstacles]

[Problems]

[Solutions]

[Advice]

[Support]

[Encouragement]

[Inspiration]

[Motivation]

[Determination]

[Perseverance]

[Resilience]

[Courage]

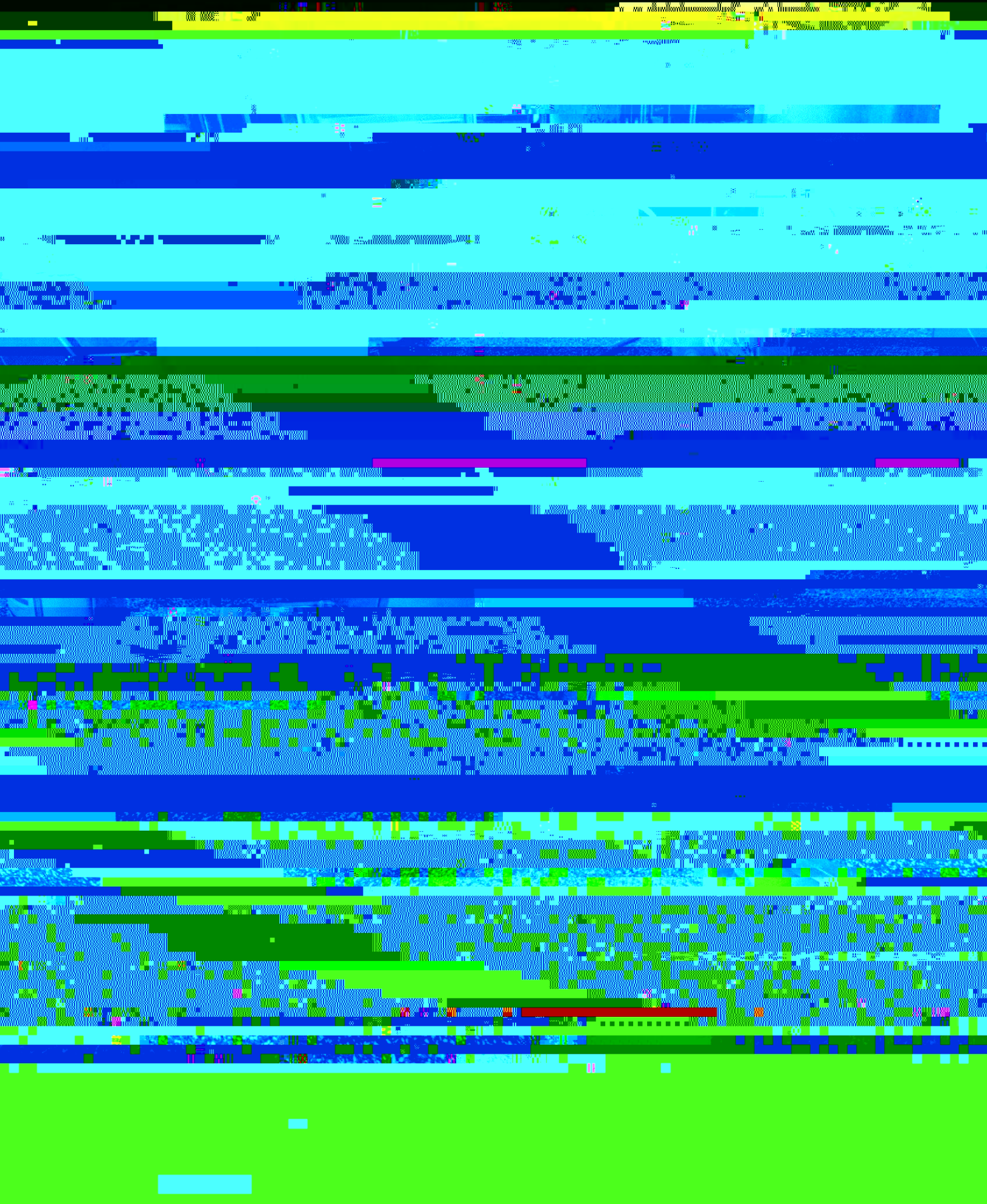
[Bravery]

[Fortitude]

[Steadfastness]

[Endurance]

[Persistence]



**Disclaimer**

The information contained in this communication from the sender is confidential. It is intended solely for use by the recipient and others authorized to receive it. If you are not the recipient, you are hereby

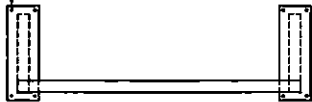
notified that any disclosure, copying, distribution or taking action in reliance on the contents of this information is strictly prohibited and may be unlawful.

This email has been scanned for malware and is safe to use. If you have any questions, please contact your IT support team.

**GENERAL NOTES:**

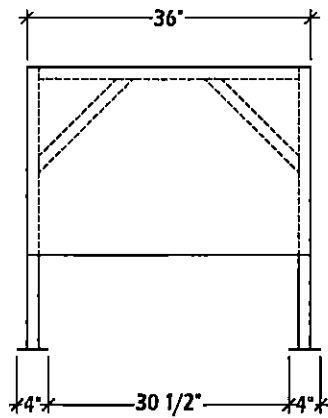
1. WRAP: 16 GA. S/S
2. MOUNTING PLATES: 14 GA. S/S
3. LEGS: 1-1/2" SQ. S/S TUBING

1/4" MOUNTING HOLES

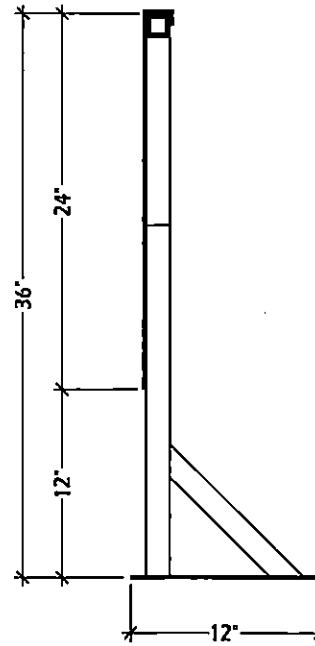


**PLAN VIEW**

SCALE: 3/4" = 1'-0"



**ELEVATION**



**SECTION "A"**

J.W. Wiseman Elementary School  
922 S Broadway St  
Portland, TN 37148

*Bid Specifications for Equipment*

Item 1: CONVECTION OVEN, DOUBLE STACKED

Manufacturer: VULCAN, or pre-approved alORDERING.

3. Electric spark ignitors.
4. Solid state temperature controls adjust from 150 degrees to 500 degrees display enhancement. Offers 60 minute timer with audible alarm.
5. Simultaneous doors. Independent door operation NOT ACCEPTED.
6. Porcelain enamel on steel oven interior.
7. Two interior oven lights.
8. Standard depth ovens.
9. Five GRAB-N-GO nickel plated oven racks per section. Eleven position rack guides with positive rack stops per section.
10. Furnished with a two speed ½ HP oven blower-motor.
11. Oven cool switch for rapid cool down.
12. Legs.
13. Rack hanger. RACK HANGRV
14. Gas flex hose & quick disconnect with restraining device.
15. Gas manifold piping included in stacking kit to provide single point gas
16. New Equipment Checkout: Equipment checkout & start up included.
17. Warranty: Two year limited parts and labor warranty.

Installation Requirements for Successful Bidder:

•

Equipment Checkout for convection oven to be scheduled with  
servicer.

County Maintenance Department to have all of the proper utilities for final  
electrical connections prior to installation.



Item 2: STEAMER  
Manufacturer: VULCAN, or pre-approved alternate  
Model: C24GA10  
Qty: 1

1. Two compartment gas convection steamer on cabinet base.
2. Natural Gas. VERIFY BEFORE ORDERING.
3. Stainless steel interior and exterior.
4. Cooking chamber to have coved interior corners.
5. Five pan capacity per compartment – Ten pan capacity for entire unit.
6. 60 minute timer and power switch with constant steam feature per each compartment.
7. Split water line connection.
8. Heavy duty door and door latch.
9. Stainless steel water resistant enclosed cabinet base.
10. Legs with flanged feet.
11. Flex hose with quick disconnect.
12. Water Filtration System – ScaleBlocker.
13. CUSTOM Water Filtration Rack – Titan Model #WFR (36”x30”x24” rack with undershelf and flanged feet)
14. Warranty: Two year limited water related parts and labor warranty, standard.
15. New Equipment Checkout: Equipment Checkout & Start up included.

Installation Requirements for Successful Bidder:

- Removal and dispose of existing steamer.
- Install Water Filter Rack and Filtration System.
- Make all final gas, electrical and plumbing connections to new steamer. The school system will be responsible for having properly sized wiring and breaker for final electrical connections by successful bidder.
- Provide free Equipment Checkout for convection oven to be scheduled with authorized servicer.
- Sumner County Maintenance Department to have all of the proper utilities for final gas and electrical/water connections prior to installation and confirm floor drain is available and operational. Proper gas pressure must be available and provided.

Item 3: BRAISING PAN  
Manufacturer: Vulcan, or pre-approved alternate  
Model #: VG30  
Qty: 1

1. Modular gas tilting braising pan, 36” wide open base.
2. Natural Gas. VERIFY BEFORE ORDERING.

3. Electrical: 120v, 1ph. 15.0 amps.
4. Stainless steel front, sides, back and 12” legs with adjustable flanged feet.
5. Front hinged polished stainless steel pan body with coved interior corners and embossed gallon markings.
6. Stainless steel cooking surface bonded to steel plate. Full width 4” return flange with formed pouring lip and removeable strainer.
7. Stainless steel spring assist cover with wrap around handle and condensate lip.
8. Drop away food receiving pan support mounts under pouring lip.
9. Manually operated pan tilting mechanism with removeable handle.
10. Electronic ignition system for automatic burner light. Burners shut off when pan is tilting 5 degrees.
11. Solid state controls.
12. Motor driven pan lift with removeable annual crank handle.
13. Two inch draw off valve – left side 90 degree front with strainer. BPDOV3
14. Double pantry faucet with washdown hose. DBFCTTS

J.W. Wiseman Elementary School  
922 S Broadway St  
Portland, TN 37148

*Bid Specifications for Cafeteria Serving Line Equipment*

Item 1:                   SERVING LINE  
Manufacturer:         DUKE, or pre-approved alternate  
Model #:                COUNTERCRAFT  
Quantity:

1. Continuous piece, enclosed base style construction.
2. 14 gauge stainless steel counter tops.
3. Counter tops to have highlighted & hemmed edges.
- 4.

plumbing, electrical runs to be housed within hard  
iron frame, copper plumbing runs, chase  
undershelf compartments.

breath guards Model BGA-1, stainless steel  
posts extend through the top securing to  
welded at counter top (grind and polish  
tempered glass front panel and serving  
edges with rounded corners, includes single  
includes LED lights as required, adheres  
shall have LED lights. All breath guards  
style for counters.

t.

plug for individual equipment electrical

all be magnetic for ease of removal for



Merrol Hyde Magnet School  
128 Township Dr  
Hendersonville, TN 37075

*Bid Specifications for Serving Line*

General Specifications:

2. Bodies to be constructed of stainless steel with veneer plastic laminate on fronts of all

counters.

3. Operator side of counters shall have hinged doors with recessed handles.

4. 1/4" gauge stainless steel top with tundra to nearest hinged door to create a seal

1. 60" long hot food counter shall have (4) 12x20 stainless steel waterless sealed hot food

2. 7" hinged stainless steel cutting board on operator side. To be flush with 1" recess.  
3. 1" recess for 18x20 sheet pans

Food shield to be two tier self-service P/GA2 with LED lights

6. Heated drop in to accommodate 2 each 18x26 sheet pans.  
7. Counter shall have 10' cord and plug. Hot wells, food shield lights, and heated drop in shall plug into interconnect box for single cord and plug for counter. NEMA L14-20P.

Item 3A: COLD FOOD COUNTER, Qty. 1  
Manufacturer: DUKE, or pre-approved alternate  
Model #: TST-60SS MOD

1. 60" long cold food counter shall have 2" filler

Item 2B: HOT FOOD COUNTER, Qty. 1  
Manufacturer: DUKE, or pre-approved alternate

Model #: TWHF-60SS

1. 60" long hot food counter shall have (4) 12x20 stainless steel waterless sealed hot food wells.
2. Electrical: 208v, 1ph.

4. 1" recess for 18x20 sheet pans.
5. Food shield to be two tier, self service. BGA2 with LED lights.
6. Food shield with HT02-SL heated drop in with LED lights.
7. Heated drop in to accommodate 2 each 18x26 sheet pans.
8. Counter shall have 10' cord and plug. Hot wells, food shield lights, and heated drop in shall plug into interconnect box for single cord and plug for counter. NEMA-I 14 20D

2. Capacity – (8) 13"x13" crates or (4) 13"19" crates.
3. Cabinet to be made of stainless steel construction interior and exterior.

6. Sliding lift up and down door.
7. Magnetic Snap-In EZ-Clean door gasket(s).
8. 8' cord and plug attached.
9. Set of 4 each 4" casters.



Merrol Hyde Magnet School  
128 Township Dr  
Hendersonville, TN 37075

*Bid Specifications for Equipment*

Item 8: CONVECTION OVEN, DOUBLE  
Manufacturer: VULCAN, or pre-approved alternate  
Model #: VC44GD  
Qty: 1

1. Double section, gas convection oven shall be constructed with stainless steel front sides.

top and legs.

2. Natural Gas: 50,000 BTUs per section/100,000 BTUs total. VERIFY BEFORE ORDERING.
3. Standard Depth.
4. Electric spark ignitors.
5. Solid state temperature controls adjust from 150 degrees to 500 degrees with digital

6. Simultaneous doors. Independent door operation NOT ACCEPTED.
7. Porcelain enamel on steel oven interior.
8. Two interior oven lights.
9. Standard depth ovens.

Item D.

HEATED PASS THRU CABINET

Manufacturer

TRAILER SEMI

Model #: AHF232WP-FHG/S  
Qty: 1

1. Two Compartment, Pass Thru Heated Cabinet
2. Electrical: 208-230v/1. 18.4 amps. VERIFY BEFORE ORDERING.
3. Full height glass doors on control side, operator side.
4. Full height stainless steel doors on customer side.
5. Door Hinging – standard.
6. Stainless steel exterior and anodized aluminum interior.
7. 58" Length, 32" Depth, 83 ¼" Height.

9. Microprocessor controls.
10. 15 each universal trayslide- per pair.
11. 4" Casters.

Installation Requirements for Successful bidder:

- Deliver, uncrate, set in place, level, remove laser film from all stainless steel, and remove

- Sumner County Maintenance Department to have all of the prior utilities for electrical connections prior to installation.
- Sumner County Maintenance Department will be responsible to verify the proper voltage/phase and to have proper NEMA receptacle for unit.

Manufacturer: VULCAN, or pre-approved alternate  
Model #: C24GA10  
Qty: 1 each

1. Two compartment gas convection oven steamer on cabinet base.

North Sumner Elementary School  
1485 N Sumner Rd  
Bethpage, TN 37022

*Bid Specifications for Cafeteria Serving Line*

General Specifications:

1. All counters shall be of modular construction with body depth of 32".
2. All counter tops shall be constructed with 14 gauge stainless steel, 300 series.

4. Exposed counter fronts shall have plastic laminate. Laminate color to be selected by Sumner County Schools at time of ordering.
5. Customer side shall have solid stainless steel tray slides with hinged brackets throughout line.
6. Operator side shall have open bases and shelves on all counter bodies.
7. Hardware for interlocking counter bodies together shall be included.
8. Counter top height to be 34" A.F.F. (above finished floor).
9. Tray slide height to be 32" A.F.F.

Item # 2: Solid Top Utility Counter  
Manufacturer: DUKE  
Model #: TST-32SS  
Quantity: 1  
Description:

1 Solid top counter shall be 32" long x 12" high x 12" deep. The counter shall be 32" long x 12" high x 12" deep.

and cold food counter (item 3).

Item # 3: Cold Food Counter with Frost Top  
Manufacturer: DUKE  
Model #: TST-60SS-FTB  
Quantity: 1  
Description:

Item # 5: Frost Top  
Manufacturer: HATCO  
Model #: FTB-S2  
Quantity: 1  
Description:

1. Remove existing concrete curb below existing serving line and smooth out the floor. Make any additional repairs to floor if necessary prior to arrival of new serving line equipment.
2. Have all electrical supply for new serving line prepared with properly sized breakers,

North Sumner Elementary School  
1485 N Sumner Rd  
Westmoreland, TN 37022

Item 1: STEAMER, TABLETOP  
Manufacturer: VULCAN, or pre-approved alternate  
Model #: C24EO5  
Qty: 1

1. Single Compartment, boilerless, table top electric steamer.
2. Electrical: 240v, 3ph. 28.9 amps. **VERIFY BEFORE ORDERING.**
3. Stainless steel interior and exterior.

5. Five nan capacity – 12"x20" nans



3. Solid state temperature controls adjust from 150 degrees to 500 degrees with digital display enhancement. Offers 60 minute timer with audible alarm.
4. Simultaneous doors Independent door operation NOT ACCEPTED

5. Porcelain enamel on steel oven interior.
6. Two interior oven lights.
7. Standard depth ovens.
8. Five GRAB-N-GO nickel plated oven racks per section. Eleven position nickel plated rack guides with positive rack stops per section.
9. Furnished with a two speed 1/2 HP oven blower-motor.
10. Oven cool switch for rapid cool down.

13. New Equipment-Checkout: Equipment checkout & start up included.
14. Warranty: Two year limited parts and labor warranty.

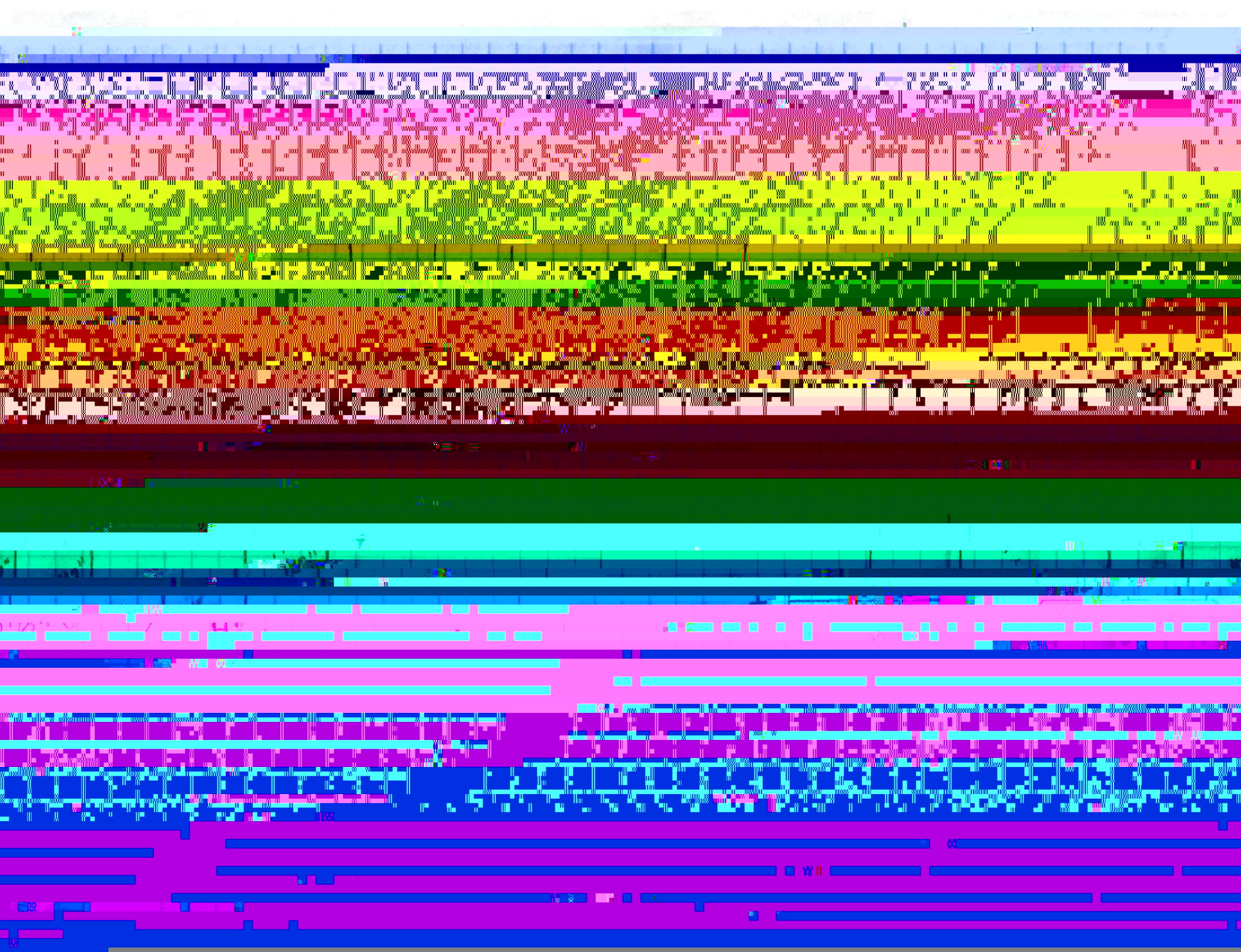
Installation Requirements for Successful Bidder:

- Removal and disposal of existing convection ovens

Item 4: HIGH HEAT FOODS PANS w/ LIDS  
Manufacturer: CARLISLE, or pre-approved alternate  
Model #: 10401B13 and 10410U13

1. (3 each) StorPlus™ High Heat Food Pan, 1/1 full size pan, 12.7 qt. capacity, 4" deep, easy-lift notch, capacity indicators, reinforced corners, chip/crack resistant, temperature range: -40° to 375°F, stackable, dishwasher safe, textured non-slip finish, polyethersulfone, amber, NSF, BPA free
2. (3 each) StorPlus™ High Heat Universal Lid, for 1/1 full-size food pan, handled, solid, stackable, temperature range: -40° to 375°F, dishwasher safe, textured non-slip finish,

3. (3 each) StorPlus™ High Heat Food Pan, 1/2 size pan, 5.5 qt. capacity, 4" deep, easy-lift



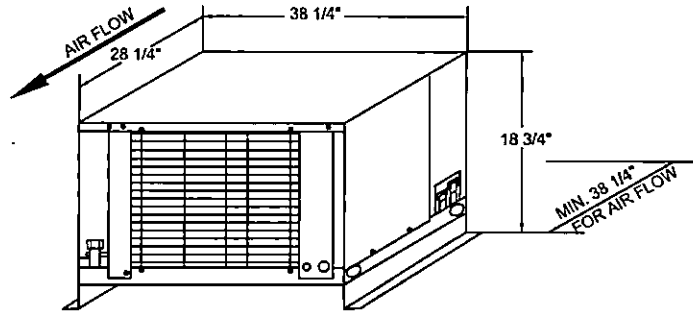
SCROLL

MEDIUM TEMPERATURE  
CONDENSING UNIT

R-448A

AIR-COOLED

208-230/60/1Ø



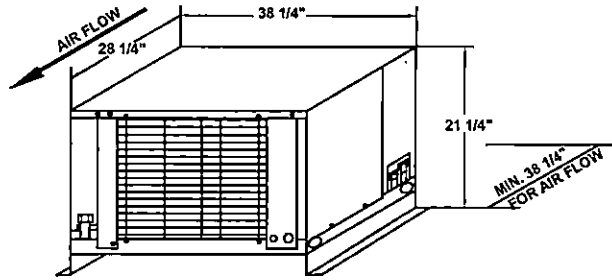
SCROLL

# LOW TEMPERATURE CONDENSING UNIT

R-448A

AIR-COOLED

208-230/60/1Ø



## SPECIFICATIONS

SPECIFICATIONS			
ELECTRICAL DATA	CAPACITY @ -10°	LINE SIZES	

Oakmont Elementary School  
3323 TN-76  
Cottontown, TN 37048

*Bid Specifications for Equipment*

Item 1:                   BAISING PAN  
Manufacturer:        VULCAN, or pre-approved alternate

1. Modular electric tilting braising pan, 46" wide open base.

2. Stainless steel front side rack, 140" x 24" x 11" (L x W x H)

M 1 L4

ORDER

Qty: 2

1. Single Compartment, full-size table-top electric stove

2. Electrical VERIFY BEFORE ORDERING

3. Stainless steel interior and exterior

4. Cooking chamber to have coved interior corners.
5. Five pan capacity - 12"x20" pans.
6. Solid sheathed tubular elements embedded in 1" thick cast aluminum iron sealed to pan bottom





1. Double section, electric convection oven shall be constructed with stainless steel front, sides, top and legs.

2. Electrical: VERIFY BEFORE ORDERING.

3. Solid state temperature controls adjust from 150 degrees to 500 degrees with digital display enhancement. Offers 60 minute timer with audible alarm.

4. Simultaneous doors. Independent door operation NOT ACCEPTED.

5. Porcelain enamel on steel oven interior.

6. Two interior oven lights.

7. Standard depth ovens.

8. Five CRAB MOUNTAIN

Oakmont Elementary School  
3323 TN-76  
Cottontown, TN 37048

*Bid Specifications for Equipment*

General Specifications:

1. Modular serving line with 24.5" wide bodies.
2. Bodies to be constructed of stainless steel.
3. Operator side of all counters shall have open base.
4. 14 gauge stainless steel tops.
5. Counter top heights to be 34" A.F.F., unless noted.
6. Food shields to be single tier, self service to full service style. Food shields to be constructed with 3/8" tempered glass with rounded edges for the guards, tops, and end panels mounted onto 1" diameter stainless steel mounting posts. LED lights. Duke model #TS462.
7. All counters to be provided with cord and plug.
8. Legs with trim and pilasters.

Itemized Specifications:

Item 1A: TRAY SLIDES  
Manufacturer: DUKE, or pre-approved alternate

1. Units to be without tray slides.
2. Wall mounted tray slide on fixed brackets to be 224" long, solid surface.

2. Electrical: 208v, 1ph. VERIFY BEFORE ORDERING.
3. Counter shall be 34" A.F.F.
4. 1" recess for 18"x24" sheet pans.
5. Counters shall have 10' cord and plug. Heated wells and food shield lights shall plug into interconnect box for single cord and plug for counter. NEMA 14-60P.

Item 3: COLD FOOD COUNTER, Qty. 1  
Manufacturer: DUKE, or pre-approved alternate  
Model #: 315-25SS N7

1. 46" long cold food counter shall be mechanically cooled and meet NSF 7 standards.
2. Electrical: 120v 1ph.

- **Sumner County Maintenance Department to have all properly sized NEMA receptacles in place for final connection by successful bidder.**

Rucker-Stewart Middle School  
350 Hancock St  
Gallatin TN 37066

*Bid Specifications for Equipment*

Item 1: CONVECTION OVEN, DOUBLE STACKED  
Manufacturer: VULCAN, or pre-approved alternate  
Model #: VC44GD  
Qty: 1

top and legs.

- Sumner County Maintenance Department to have all of the proper utilities for final electrical and gas connections prior to installation. Proper gas pressure must be available and provided.

Item 2: STEAMER  
Manufacturer: VULCAN, or pre-approved alternate  
Model: C24GA10  
Qty: 1

1. Two compartment gas convection steamer on cabinet base.
2. Natural Gas. VERIFY BEFORE ORDERING.
3. Stainless steel interior and exterior.
4. Cooking chamber to have coved interior corners.
5. Five pan capacity per compartment – Ten pan capacity for entire unit.

7. Split water line connection.
8. Heavy duty door and door latch.
9. Stainless steel water resistant enclosed cabinet base.

Model #: VG40  
Qty: 1

1. Modular gas tilting braising pan, 46" wide open base.
2. Natural Gas. VERIFY BEFORE ORDERING.
3. Electrical: 120v, 1ph. 15.0 amps.
4. Stainless steel front, sides, back and 12" legs with adjustable flanged feet.
5. Front hinged polished stainless steel pan body with coved interior corners and embossed

6. Stainless steel cooking surface bonded to steel plate. Full width 4" return flange with formed pouring lip and removeable strainer.
7. Stainless steel spring assist cover with wrap around handle and condensate lip.
8. Drop away food receiving pan support mounts under pouring lip.
9. Manually operated pan tilting mechanism with removeable handle.
10. Electronic ignition system for automatic burner light. Burners shut off when pan is tilting 5 degrees.
11. Solid state controls.
12. Motor driven pan lift with removeable annual crank handle.
13. Two inch draw off valve – left front straight with strainer. BPD0V1
14. Double pantry faucet with washdown hose. DBFCTTS-WSHDWN
15. 48" Dormont Gas connector.
16. Warranty: Two year extended limited parts and labor warranty.

Installation Requirements for Successful Bidder:

- Deliver, uncrate, set in place, level, remove laser film from all stainless steel, and remove crating from the premises.
- Make all final gas, electrical and plumbing connections to new braising pan. The school will be responsible to have properly sized wiring and breaker for final electrical connections by successful bidder.
- Provide free Equipment Checkout for braising pan to be scheduled with authorized

4. Evaporator Coil outside food zone.
5. StayClear Condenser Coil.

6. Stainless steel front

7. Full height stainless steel door with locks.
8. Thermostatic Expansion Valve Metering Device.
9. EZ clean door gasket.
10. 3 epoxy coated shelves factory installed.
11. 6" locking casters.

12. Weather Strip



Shafer Middle School  
240 Albert Gallatin Ave  
Gallatin, TN 37066

*Bid Specifications for Equipment*

1. \_\_\_\_\_  
1. \_\_\_\_\_

2. \_\_\_\_\_  
2. \_\_\_\_\_

Model #: C24ET6  
Qty: 1 each

1. Two compartment electric convection oven steamer or cabinet oven

Model #: RMC49D4  
QTY: 2 each

1. Dual Access Milk Cooler to have top mount removable refrigeration system.
2. Capacity – (12) 13"x13" crates or (24) 13"x19" crates
2. Cabinet to be made of stainless steel construction interior and exterior.
3. Cold Wall Refrigeration not accepted
4. Reinforced cabinet exterior bottom.
5. Sliding lift up and down door
6. Magnetic Snap-In EZ-Clean door gasket(s)
7. 8' Cord and Plug attached
8. Set of 4 each 4" casters

Installation Requirements for successful bidder:

- Deliver, uncrate, set in place, level, remove laser film from all stainless steel, and remove

1. Cashier station shall have drawer with lock and key.

2. 14 gauge stainless steel top.
3. Cashier station to have tray slides on operator right. Tray slide to have 2" turndown. Tray slide height to be 30" A.F.F.
4. Counter height to be 34" A.F.F.
5. Cutout on top with grommet for POS power cords.
6. Legs.
7. Electrical outlet mounted in base of counter Duplex 5-15P To be provided with 10' cord

and plug.

Installation Requirements for Successful Bidder:

- Removal and dispose of existing cashier stations.
- Deliver, uncrate, set in place, level, remove laser film from all stainless steel, and remove crating from the premises of the new cashier stations.

Item 6: MERCHANDISER, Qty. 1

Gallatin, TN 37066

*Bid Specifications for Convection Ovens*

Item 2: CONVECTION OVEN, DOUBLE  
Manufacturer: VULCAN, or pre-approved alternate  
Model #: VC44GD  
Qty: 1

1. Double section gas convection oven shall be constructed with stainless steel front sides

top and legs.

2. Natural Gas: 50,000 BTUs per section/100,000 BTUs total. VERIFY BEFORE

- Sumner County Maintenance Department to have all of the prior utilities for gas and electrical connections prior to installation. Proper gas pressure must be available and provided.

Union Elementary School  
516 Carson St.  
Gallatin, TN 37066

General Specifications:

1. All counters shall be of modular construction with body depth of 24.5" for mass

constraints in the facility.

2. All counter tops shall be constructed with 1/4" gauge stainless steel 290 series

Item # 2: Cold Food Counter

Model #: 308-25PG  
Quantity: 1  
Description:

1. Solid top counter shall be 32" long and be located in between hot food counter (item 1) and cold food counter (item 3).

Item # 3: Cold Food Counter  
Manufacturer: DUKE

Quantity: 1  
Description:

1. Cold food counter shall be mechanically cooled with NSF 7 rated cold pan with capacity to hold four (4) 12" x 20" steam table pans.
2. Condensate Evaporator.
3. Counter shall be 60" long.
4. Double Shelf food shield shall be adjustable. Duke model # TS462-DD food shield shall come equipped with LED lights. Food shield to be constructed with 1" round stainless

INSTALLATION REQUIREMENTS FOR SUCCESSFUL BIDDING

1. Remove and haul off existing serving line equipment.
2. Receive, deliver, uncrate, set in place, level, securely fasten all counter bodies together, remove all laser film from stainless steel, remove crating from premises and make all final electrical connections for new serving line equipment.
3. Field verify all dimensions and utility requirements prior to ordering equipment from manufacturers.

SUMNER COUNTY SCHOOLS SHALL BE RESPONSIBLE FOR THE FOLLOWING:

1. Remove existing concrete curb below existing serving line and smooth out the floor.



Vena Stuart Elementary School  
780 Hart St  
Gallatin, TN 37066

*Bid Specifications for Equipment*

Item 1: MILK COOLER  
Manufacturer: TRAUlsen, or pre-approved alternate  
Model #:

QTY: 2 each

1. Dual Access Milk Cooler to have top mount removable refrigeration system

7. Electrical outlet mounted in base of counter. Duplex 5-15P. To be provided with 10' cord and plug.

Item 4: CASHIER COUNTER, Qty. 1  
Manufacturer: DUKE, or pre-approved alternate  
Model #: TCS-30SS

1. Cashier station shall have drawer with lock and keys.
2. 14 gauge stainless steel top.
3. Cashier station to have tray slides on operator right. Tray slide to have 2" tumdown. Tray slide height to be 30" A.F.F.
4. Counter height to be 34" A.F.F.
5. ~~Cutout on top with grommet for POS power cords~~

7. Electrical outlet mounted in base of counter. Duplex 5-15P. To be provided with 10' cord and plug.

Installation Requirements for successful bidder:

West Moreland Middle School  
4128 Hawkins Dr  
Westmoreland, TN 37186

*Bid Specifications for Serving Line*

General Specifications:

1. Modular serving lines with 30" wide bodies.
2. Bodies to be constructed of stainless steel with veneer plastic laminate on fronts of all counters. Color to be determined by Sumner County Schools at time of ordering.
3. Operator side to have hinged doors with recessed handles.

<sup>4</sup> 1/4" square stainless steel legs with toe kicks on both sides.

Item 1A: TRAY AND SILVERWARE CART, Qty. 1  
Manufacturer: DUKE, or pre-approved alternate  
Model #: TTS-32SS

1. Seven silverware cutouts with plastic silverware cups.
2. Napkin dispensers by others.
3. Casters.

Manufacturer: DUKE, or pre-approved alternate  
Model #: TTS-32SS

1. Seven silverware cutouts with plastic silverware cups.
2. Napkin dispensers by others.
3. Casters.

Item 2: HEATED HOLDING CABINET, Qty. 2  
Manufacturer: F.W.E. or pre-approved alternate  
Model #: MTU-12  
Qty: 2

Item 4A:  
Manufacturer:

UTILITY COUNTER, Qty. 1  
DUKE, or pre-approved alternate

1. Drop in Refrigerated wells shall be mechanically cooled and meet NSF 7 standards.

2. Electrical 120-140 Volts (NECA 510)

3. 110-115 Volts (NECA 510)

4. Warranty: One year parts and labor warranty.

5. Drop in to be purchased by KEC and installed by manufacturer.

2. Rectangular cutout with reinforced edges, in counter top.
3. Food shield to be in self service position.
4. Food shields to be single tier and with LED bulbs.
5. Counter to be 34" A.F.F.
6. Louvered hinged grille.
7. Grommet for cord pass.

food shield lights shall plug into receptacle mounted at the base of the counter for single cord and plug.

Item 4B.1:

HOT/FROST DROP IN, Qty. 1

~~May be substituted~~

~~DUKE or any approved alternate~~

Item 7B: UTILITY COUNTER, Qty. 1

Model #: 308-25PG

1. 32" long solid top counter.
2. Counter to be 34" A.F.F.

Item 8A: CASHIER STATION, Qty. 1

Manufacturer: DUKE, or pre-approved alternate  
Model #: 306-25PG

1. Cashier station shall have drawer with lock and keys.
2. Cashier station to have tray slide operator left.
3. Counter to be 34" A.F.F.



West Moreland Middle School  
4128 Hawkins Dr

*Bid Specifications for Equipment*

Item 9: STEAMER  
Manufacturer: VULCAN, or pre-approved alternate  
Model #: C24ET10  
Qty: 1 each

1. Two compartment electric convection oven steamer on cabinet base.
2. Electrical: 480v, 3ph. 36.1 amps. VERIFY BEFORE ORDERING.
3. Stainless steel interior and exterior.
4. Cooking chamber to have coved interior corners.
5. Five pan capacity per compartment – ten pan capacity for entire unit.

Model #: VC44ED  
Qty: 1

1 Double section electric convection oven shall be constructed with stainless steel front

sides, top and legs.

2 Electrical: 208v 3ph 70 amps each compartment VERIFY BEFORE ORDERING

3. Solid state temperature controls adjust from 150 degrees to 500 degrees with digital

9. Solid state controls.

10. Motor driven pan lift with removeable annual crank handle.

11. [Redacted]

12. Double pantry faucet with washdown hose. DBFCTTS-WSHDWN

13. Warranty: Two year extended limited parts and labor warranty.

Installation Requirements for Successful Bidder:

- Removal and dispose of existing braising pan.

• Deliverments to be placed in development area of Star Line Hospital

• [Redacted]